

AUSTRALIA

AERONAUTICAL INFORMATION SERVICE
AIRSERVICES AUSTRALIA
GPO BOX 367, CANBERRA ACT 2601

AERONAUTICAL INFORMATION CIRCULAR (AIC)

Phone: 02 6268 4874
Email: aim.editorial@airservicesaustralia.com

H04/18

Effective: 201803241600 UTC

XXI COMMONWEALTH GAMES VENUES AND EVENTS, AIRSPACE RESTRICTIONS FOR REMOTELY PILOTED AIRCRAFT, 25 MARCH - 18 APRIL 2018

1. INTRODUCTION

- 1.1 This aeronautical information circular (AIC) cancels and replaces AIC H01/18, with changes to TRA descriptions in Appendix 4.
- 1.2 The XXI Commonwealth Games are being held between 4-15 April 2018 at Cairns, Townsville, Brisbane and the Gold Coast.
- 1.3 This AIC provides information about the areas subject to restrictions for commercial, sport and recreational remotely piloted aircraft (RPA), unmanned balloons and rocketry operations during the XXI Commonwealth Games events and for a period preceding and following the event. Such restrictions will be in place for the period 25 March to 18 April 2018 (inclusive).

2. SECURITY ARRANGEMENTS

- 2.1 The Department of the Prime Minister and Cabinet, Queensland Government, Gold Coast 2018 Commonwealth Games Corporation (GOLDOC), Department of Defence and Airservices Australia have established airspace procedures and comprehensive security measures for the safety of participants, public and visiting dignitaries for the event. The airspace procedures also provide for the safety of various aviation activities supporting the event.
-

- 2.2 The airspace restrictions described in this AIC by the establishment of temporary restricted areas (TRA's) under the Airspace Regulations 2007 are only applicable to commercial, sport and recreational RPA, unmanned balloons and rocketry operations. For piloted aircraft restrictions and procedures, refer to AIP Supplement H183/17.

3. AIRSPACE RESTRICTIONS – TRA'S

- 3.1 Airspace restrictions apply at the Carrara Stadium for the Opening and Closing Ceremonies (including preparation and post event activities) for low-level helicopter operations. These are described at Appendix 1.
- 3.2 Airspace restrictions apply at the Athlete's Village. These are shown at Appendix 2.
- 3.3 Airspace restrictions apply at all other event venues. These are shown at Appendix 3.
- 3.4 Airspace restrictions apply at event locations during low-level helicopter operations. No RPA operations will be provided an approval to operate where low-level helicopter operations are being conducted due to safety of flight considerations. These are described at Appendix 4.
- 3.5 No sport or recreational RPA, unmanned balloons and rocketry operations will be given a permission to operate within any of the TRAs as listed in this AIC.
- 3.6 Commercial RPA operations in the airspace subject to restrictions in this AIC is not available unless prior approval has been granted by the Controlling Authority; the Queensland Police Service.

Email: CommGames.Aviation@police.qld.gov.au

Phone: 07 3015 3327.

Such request for prior approval to operate must be forwarded to the Controlling Authority by no later than 9 February 2018.

- 3.7 During the activation periods of the TRAs described in this AIC, commercial RPA operators that have been given a prior approval to operate during the event, are to liaise with the Controlling Authority; the Queensland Police Service.

Email: CommGames.Aviation@police.qld.gov.au

Phone: 07 5570 7959 (24 HR).

- 3.8 There will be increased police presence at all venues to monitor compliance with the airspace restrictions in this AIC. Penalties apply for non-compliance.
-

4. CASA OPERATIONAL APPROVALS

- 4.1 RPA operator certificate holders requiring additional operational approvals and/or flight authorisations are requested to make contact with CASA as soon as possible by email: rpas@casa.gov.au Late submissions for operational approvals and/or flight authorisations, unless for an emergency operation, are unable to be prioritised over existing applications already in queue.
- 4.2 RPA operator certificate holders are reminded to ensure they are familiar with their operational approvals and limitations, particularly with regard to beyond visual line of sight operations, and flight over a populous area.

5. LEGISLATION

- 5.1 All commercial, sport and recreational RPA, unmanned balloons and rocketry operators are reminded to be familiar with regulations for such operations.

Civil Aviation Safety Regulation 1998 Part 101 may be accessed at:
<https://www.legislation.gov.au/Details/F2017C00742>

Information for sport and recreational RPA operators may be accessed at:
<https://www.casa.gov.au/modelaircraft>

A simple web site for recreational RPA operators may also be accessed at:
<https://www.droneflyer.com.au/>

Commercial RPA operators may access information at:
<https://www.casa.gov.au/standard-page/flying-drones-commercially>

- 5.2 No RPA operations are permitted in controlled airspace without ATC approval in accordance with current regulations.

6. CANCELLATION

- 6.1 This AIC cancels at 10:00pm on 18 April 2018.

7. DISTRIBUTION

- 7.1 Airservices Australia website.
- 7.2 CASA RPA Landing Page.

Appendices

1. Carrara Stadium TRA
 2. TRA Athlete's Village
 3. Other Venues
 4. Low-Level Helicopter Operations TRA Marathon
-

1. Carrara Stadium TRA

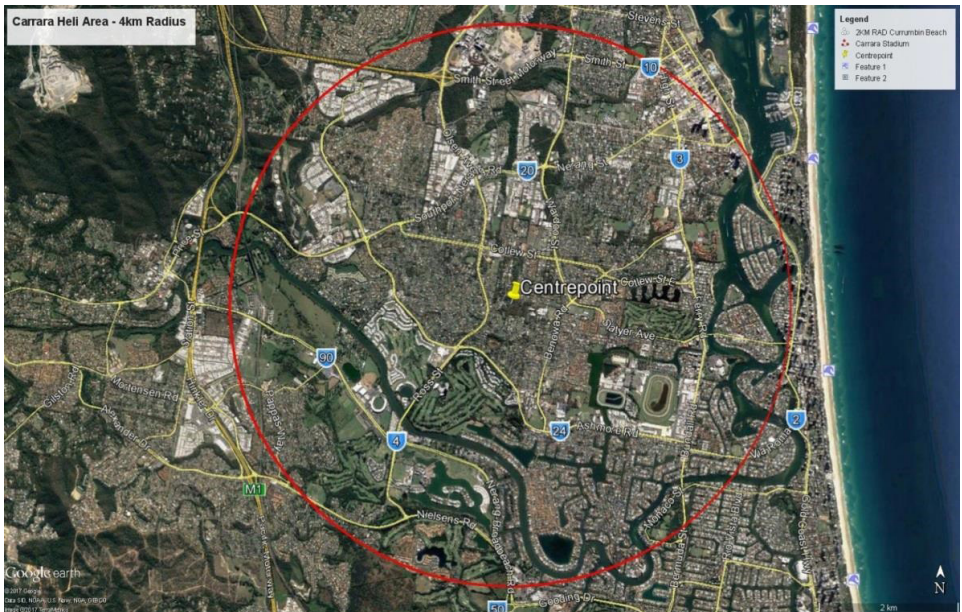


Figure 1: The red circle indicates the area encompassed by the TRA

Description:

This TRA for Carrara Stadium is established within 4km radius of the position S27 59 39.04 E153 23 12.66 as shown in Figure 1 above from surface to 1000FT above ground level (AGL) on the following dates/times for opening and closing ceremony activities. For sporting event activities at Carrara Stadium see Appendix 3.

2 April from 5:00pm to 11:59pm

4 April from 5:00pm to 11:59pm

15 April from 7:00pm to 11:59pm

2. TRA Athlete's Village

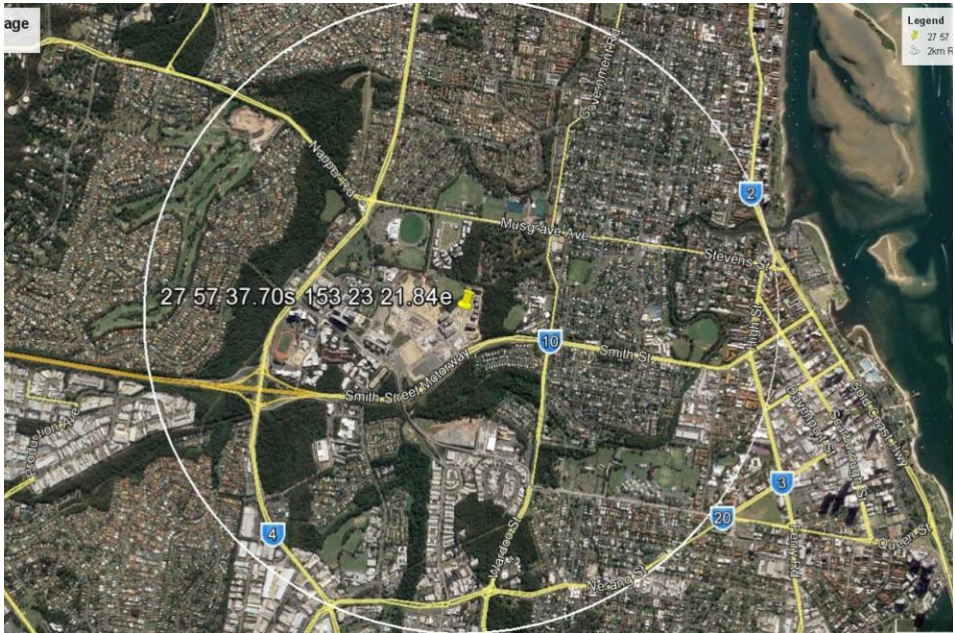


Figure 2: The white circle indicates the area encompassed by the TRA

Description:

TRA Athlete's Village is established within 2km radius of the position 27 57 37.70S 153 23 21.84E (the Athlete's Village at Smith Street, Southport, QLD) as shown in Figure 8 above from surface to 1000FT above ground level (AGL) on the following dates/times:

From 25 March at 00:01am to 18 April at 10:00pm

3. OTHER VENUES

Description:

TRA's are established within 2km radius of the addresses listed below from surface to 1000FT above ground level (AGL) on the dates/times listed. Refer to the images showing the 2km radius at each location with street names for reference.

No RPA operations are permitted in controlled airspace without ATC approval in accordance with current regulations.

Belmont Shooting Centre

1485 Old Cleveland Road, Belmont, QLD

From 6 April at 00:01am to 14 April at 7:00pm

Refer to Figure 3

Broadbeach Bowls Club

169 Surf Parade, Broadbeach, QLD

From 3 April at 00:01am to 13 April at 11:59pm

Refer to Figure 4

Cairns Convention Centre

Corner of Sheridan and Wharf Streets, Cairns City, QLD

From 4 April at 00:01am to 10 April at 11:59pm

Refer to Figure 5

Carrara Stadium/ Carrara Sports and Leisure Centre

Lot 8/ 296 Nerang-Broadbeach Rd, Carrara, QLD

From 26 March at 00:01am to 16 April at 02:00am

Refer to Figure 6

Coolangatta Beachfront

Queen Elizabeth Park, Marine Parade, Coolangatta, QLD

From 5 April at 00:01am to 12 April at 11:59pm

Refer to Figure 7

Coomera Indoor Sports Centre

35 Beattie Road, Coomera, QLD

From 2 April at 00:01am to 15 April at 5:00pm

Refer to Figure 8

Currumbin Beach

Wallace Nicoll Park, Pacific Parade, Currumbin, Qld

From 7 April at 00:01am to 14 April at 19:00

Refer to Figure 9

Gold Coast Aquatic Centre

Broadwater Parklands, Marine Parade, Southport, QLD

From 31 March at 11:00pm to 15 April at 01:00am

Refer to Figure 10

Gold Coast Convention and Exhibition Centre

2684-2690 Gold Coast Highway, Broadbeach, QLD

From 29 March at 00:01am to 15 April at 04:00pm

Refer to Figure 11

Gold Coast Hockey Centre

Keith Hunt Park, 125 Musgrave Avenue, Labrador, QLD

From 2 April at 11:00pm to 15 April at 01:00am

Refer to Figure 12

Oxenford Studio

Entertainment Road, Oxenford, QLD

From 31 March at 00:01am to 15 April at 5:00pm

Refer to Figure 13

Queensland State Velodrome

1763 Old Cleveland Road, Chandler, QLD

From 2 April at 00:01am to 8 April at 11:59pm

Refer to Figure 14

Robina Stadium

Centreline Place, Robina, QLD

From 10 April at 00:01am to 15 April at 6:00pm

Refer to Figure 15

Townsville Entertainment & Convention Centre

Entertainment Drive, Townsville City, QLD

From 4 April at 00:01am to 11 April at 01:00am

Refer to Figure 16

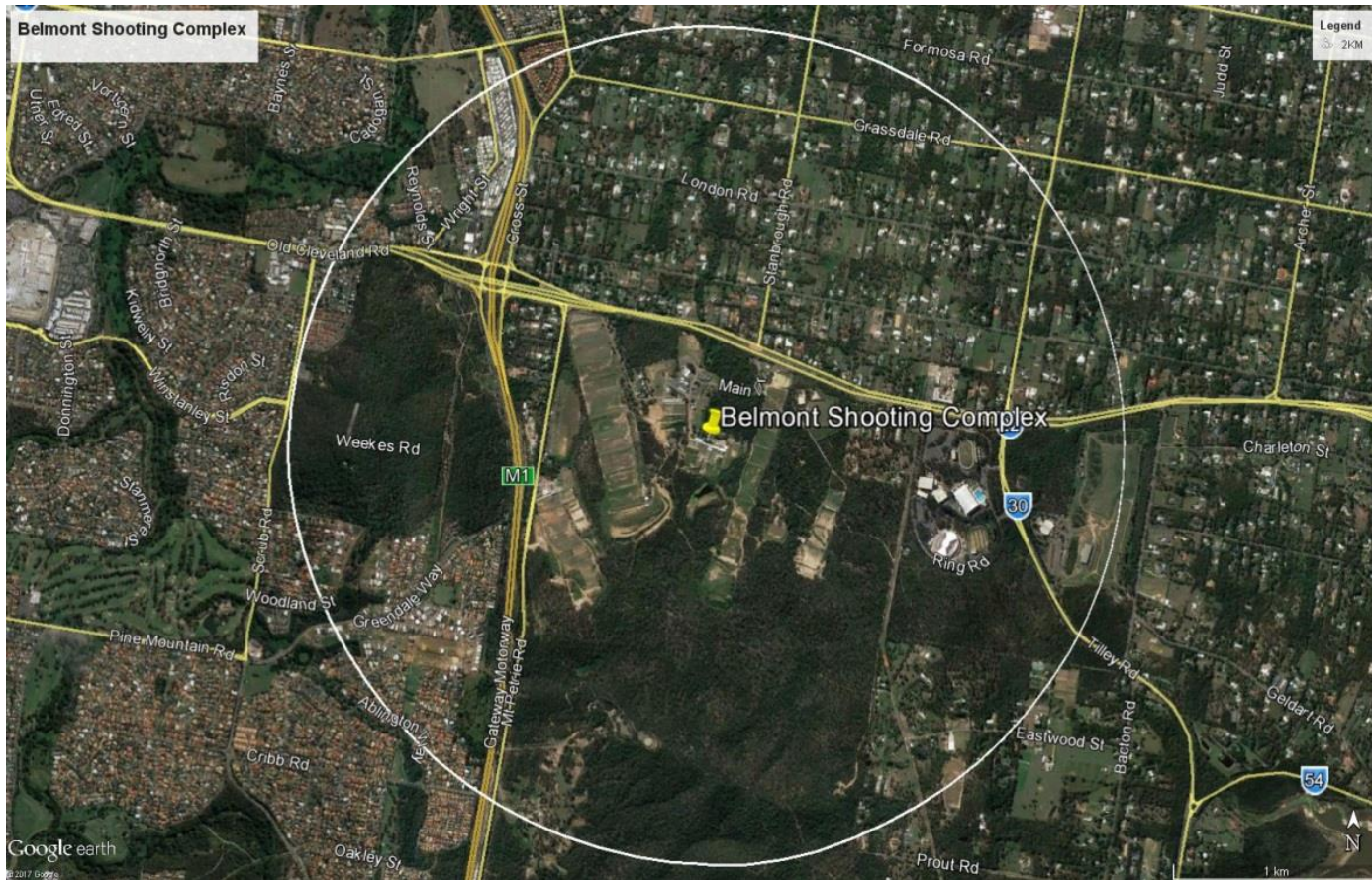


Figure 3: The white circle above indicates the area encompassed by the TRA

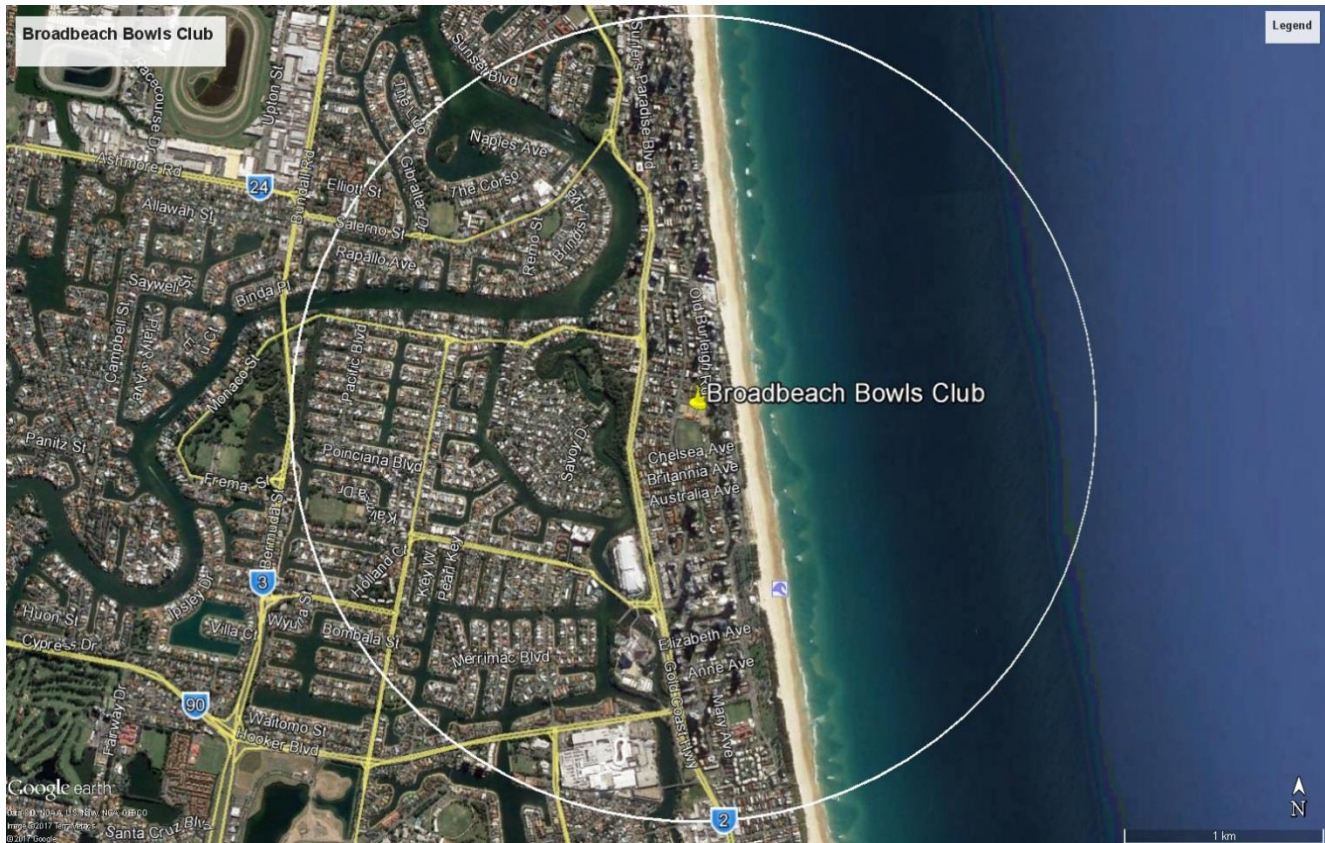


Figure 4: The white circle above indicates the area encompassed by the TRA

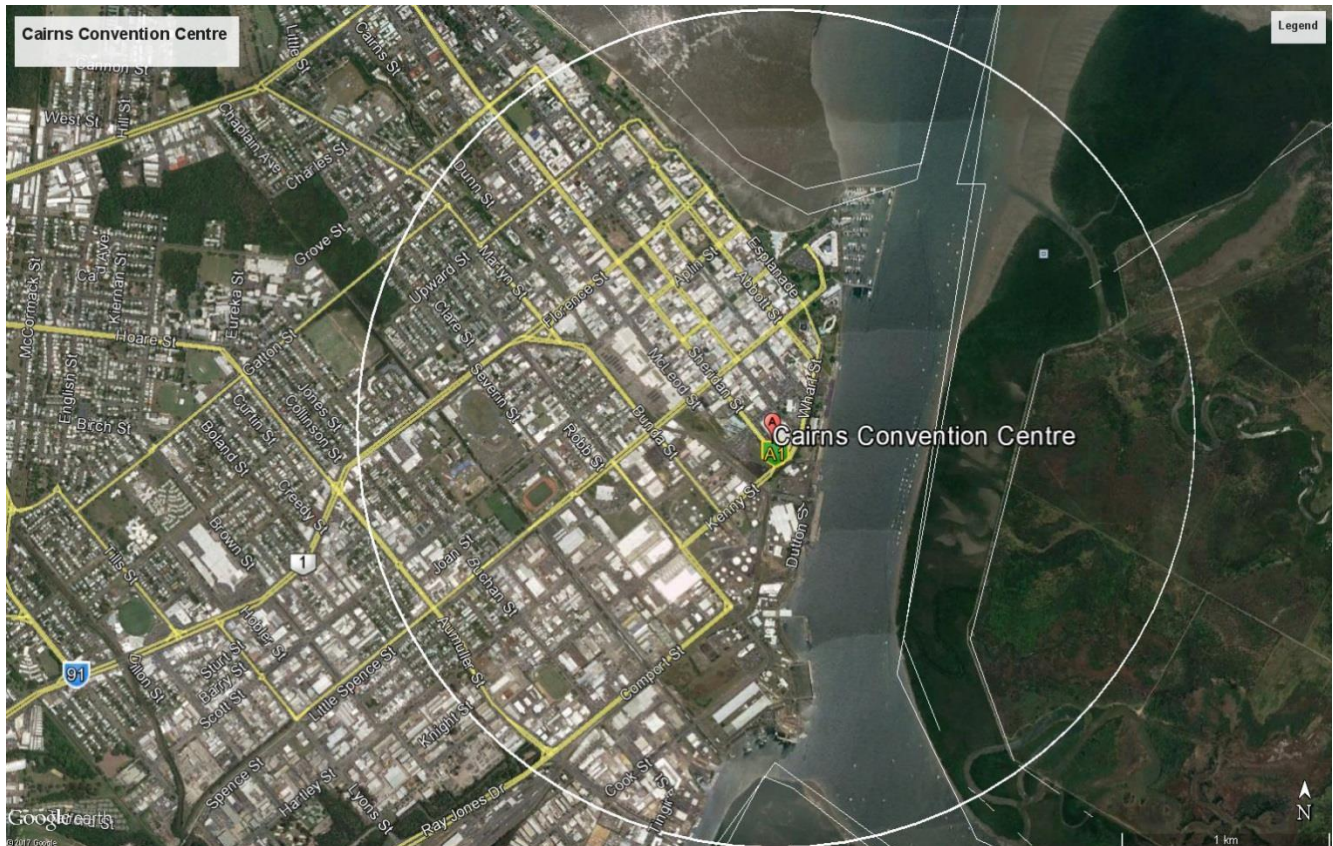


Figure 5: The white circle above indicates the area encompassed by the TRA

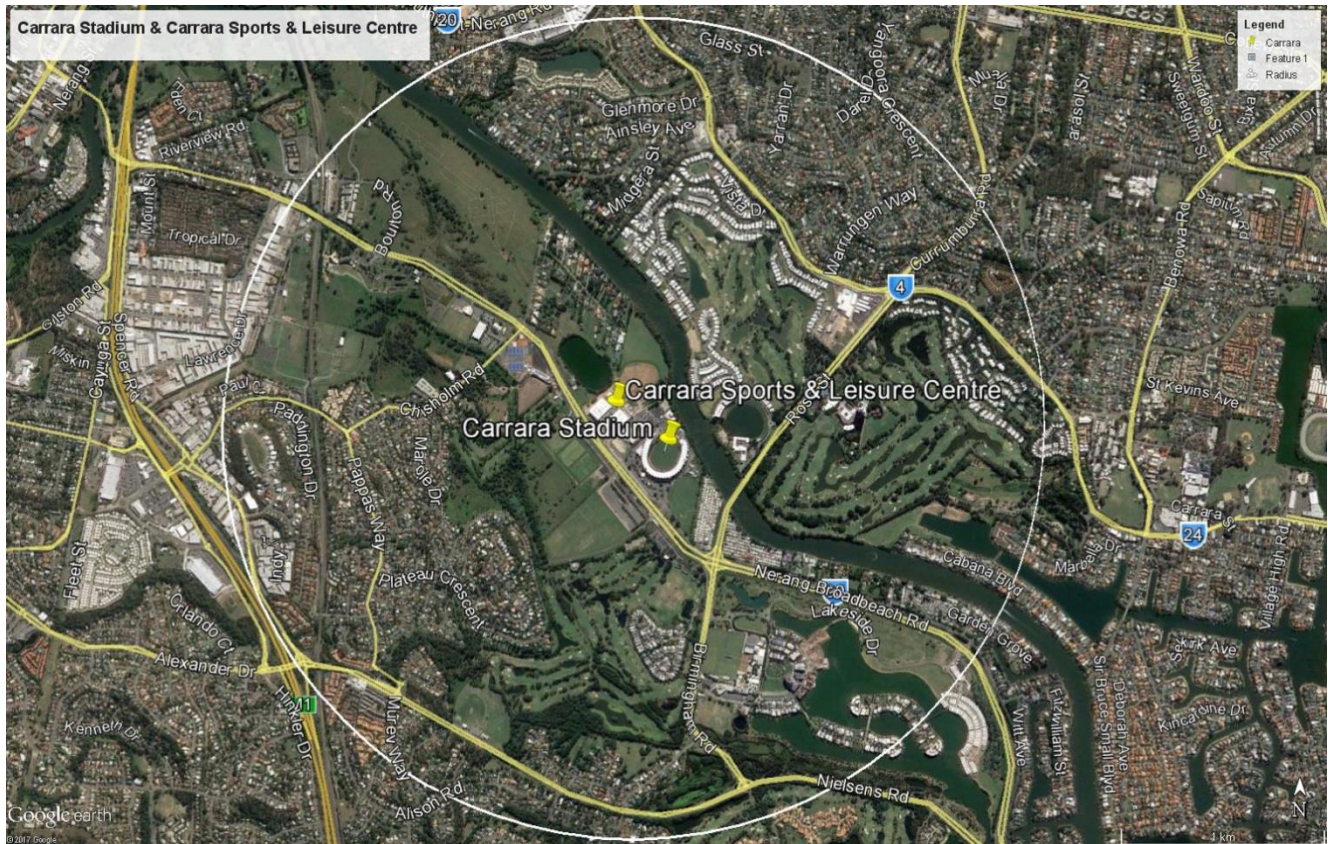


Figure 6: The white circle above indicates the area encompassed by the TRA

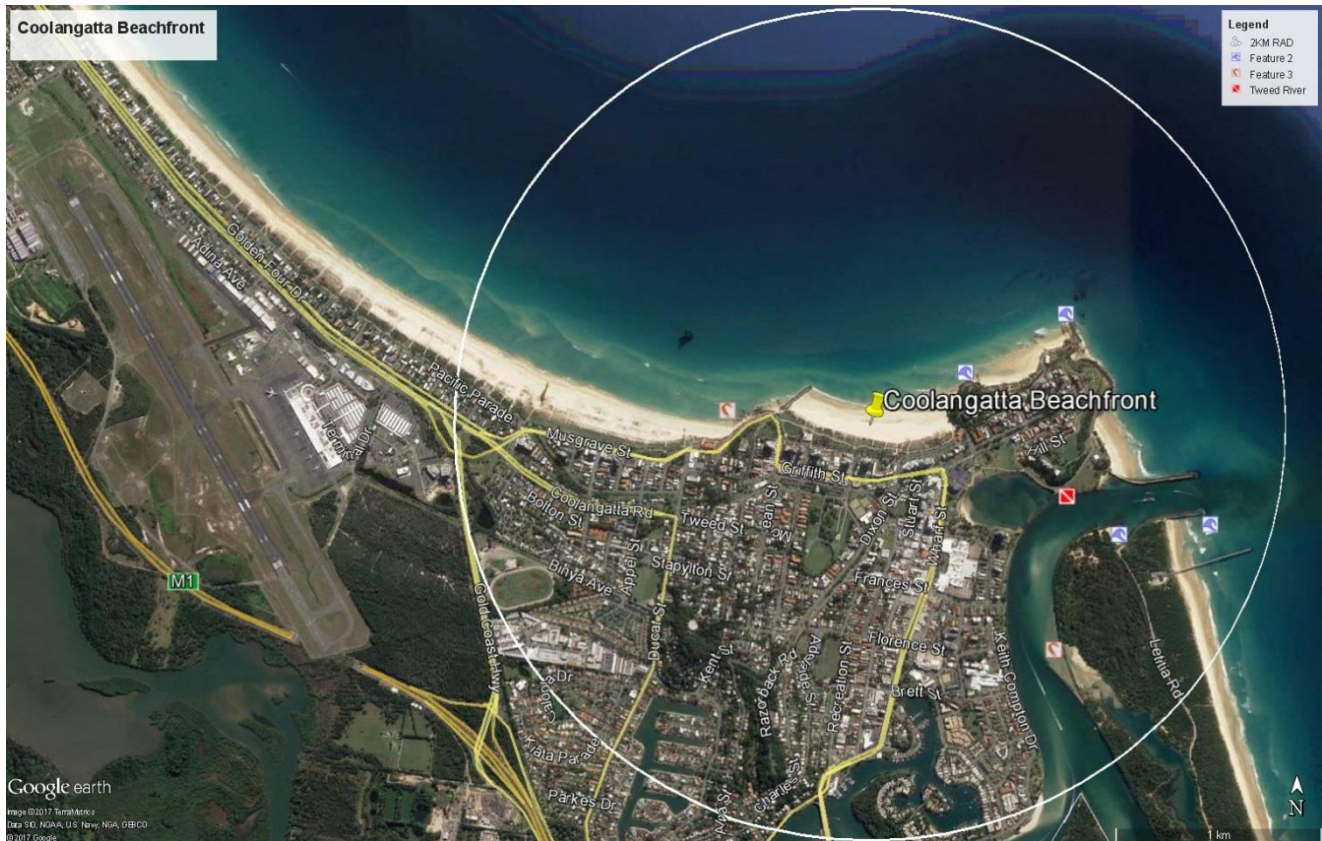


Figure 7: The white circle above indicates the area encompassed by the TRA

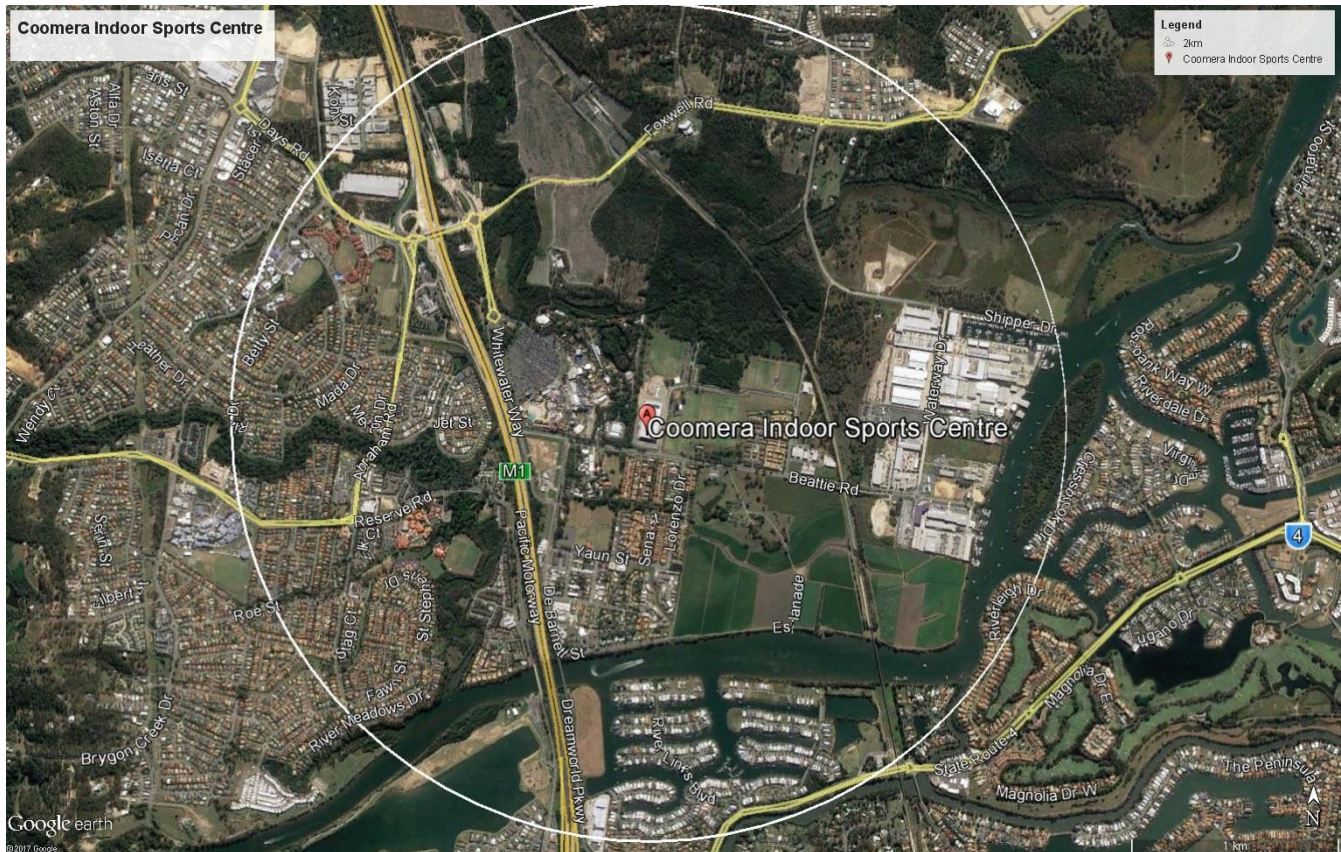


Figure 8: The white circle above indicates the area encompassed by the TRA

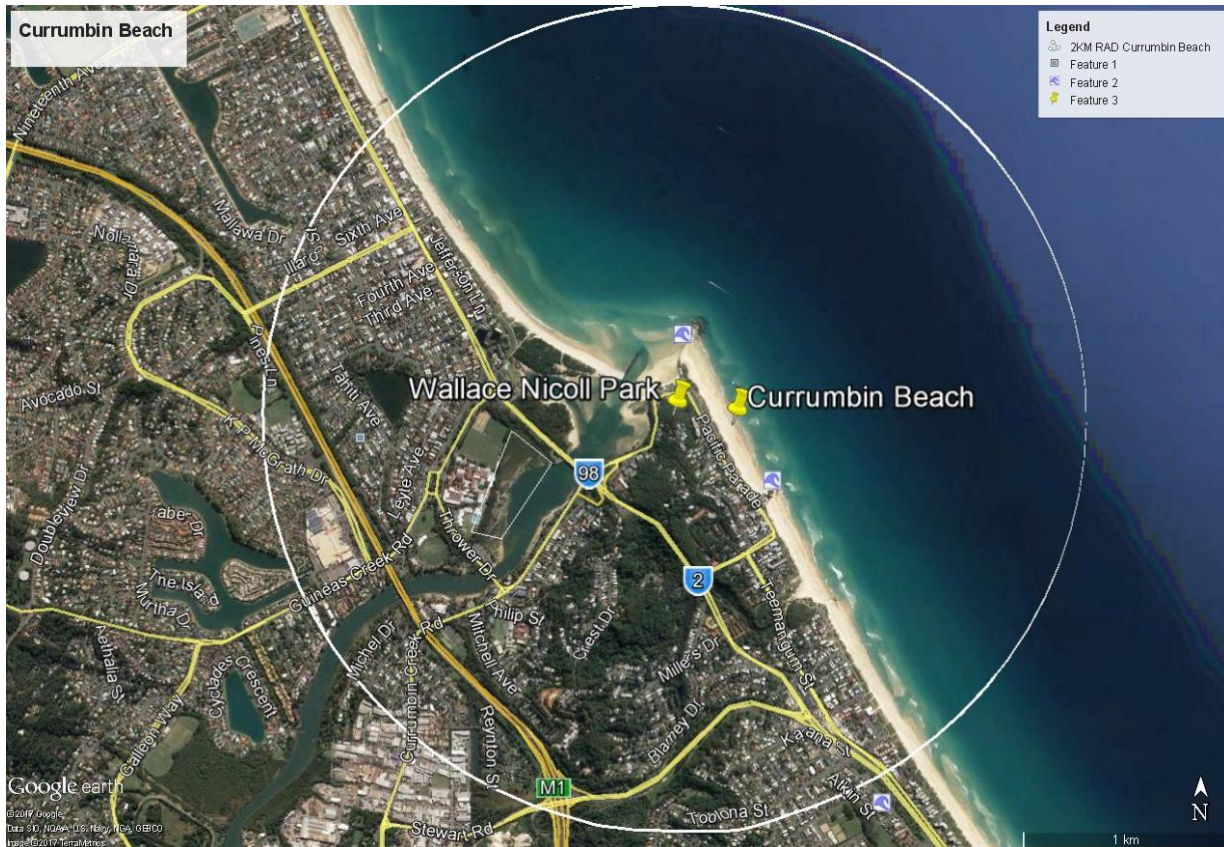


Figure 9: The white circle above indicates the area encompassed by the TRA

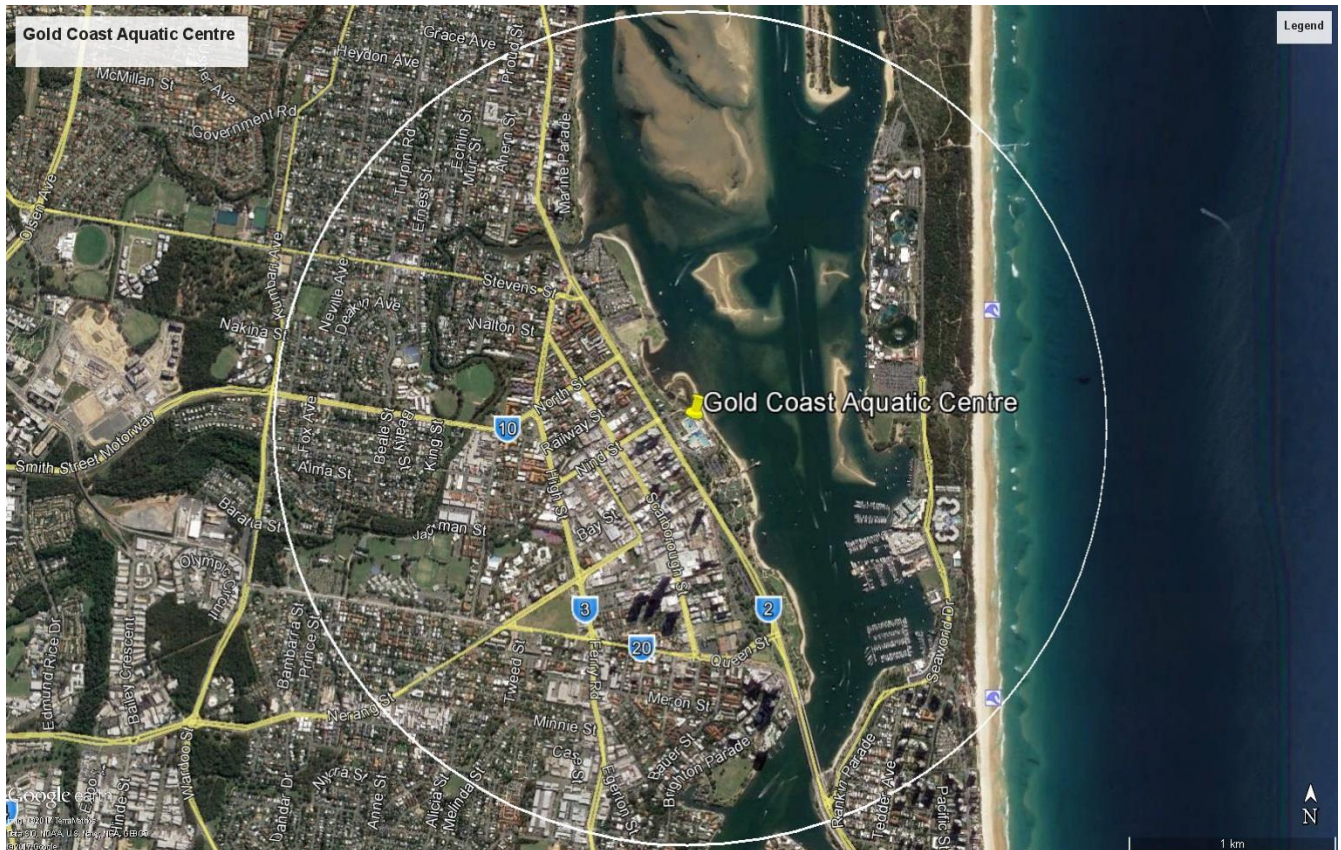


Figure 10: The white circle above indicates the area encompassed by the TRA

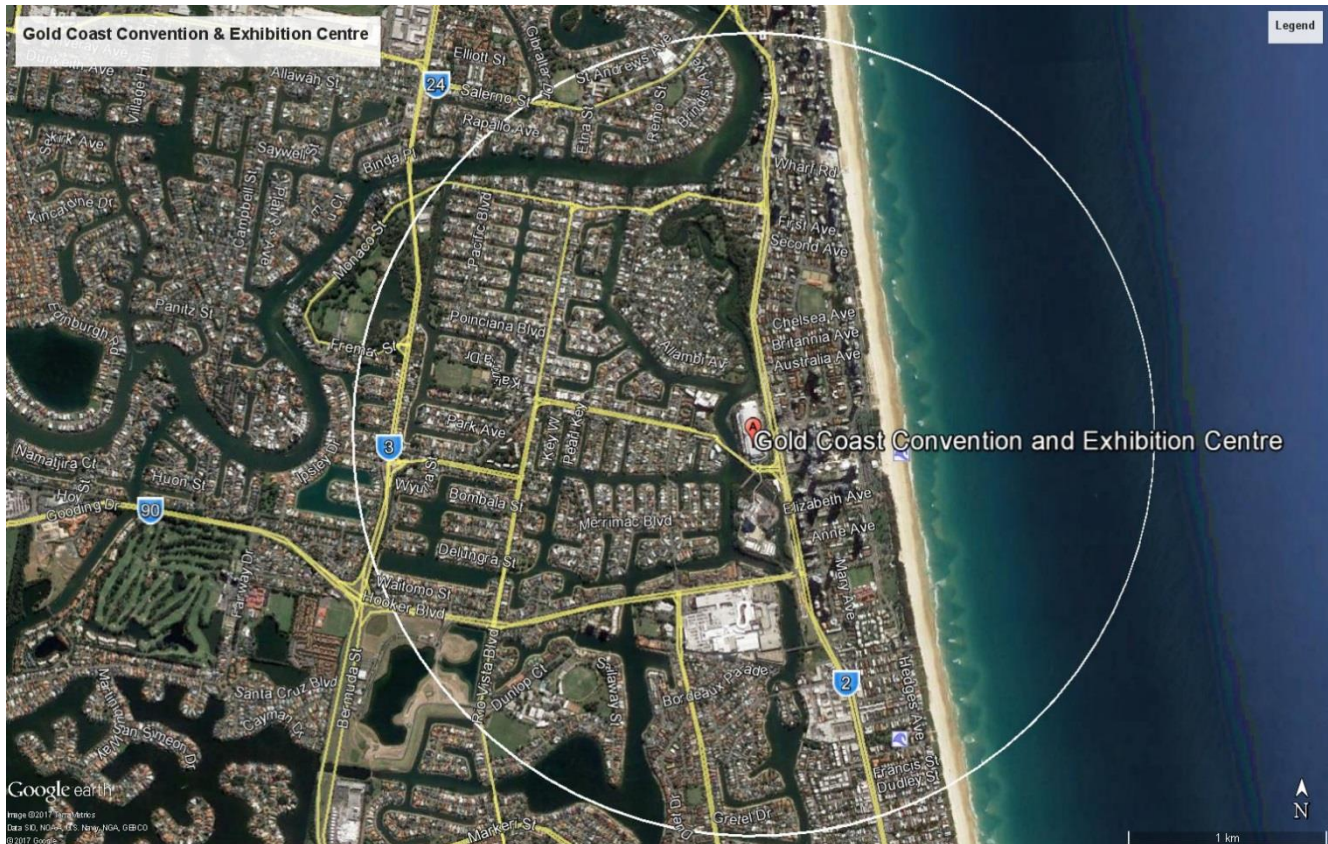


Figure 11: The white circle above indicates the area encompassed by the TRA

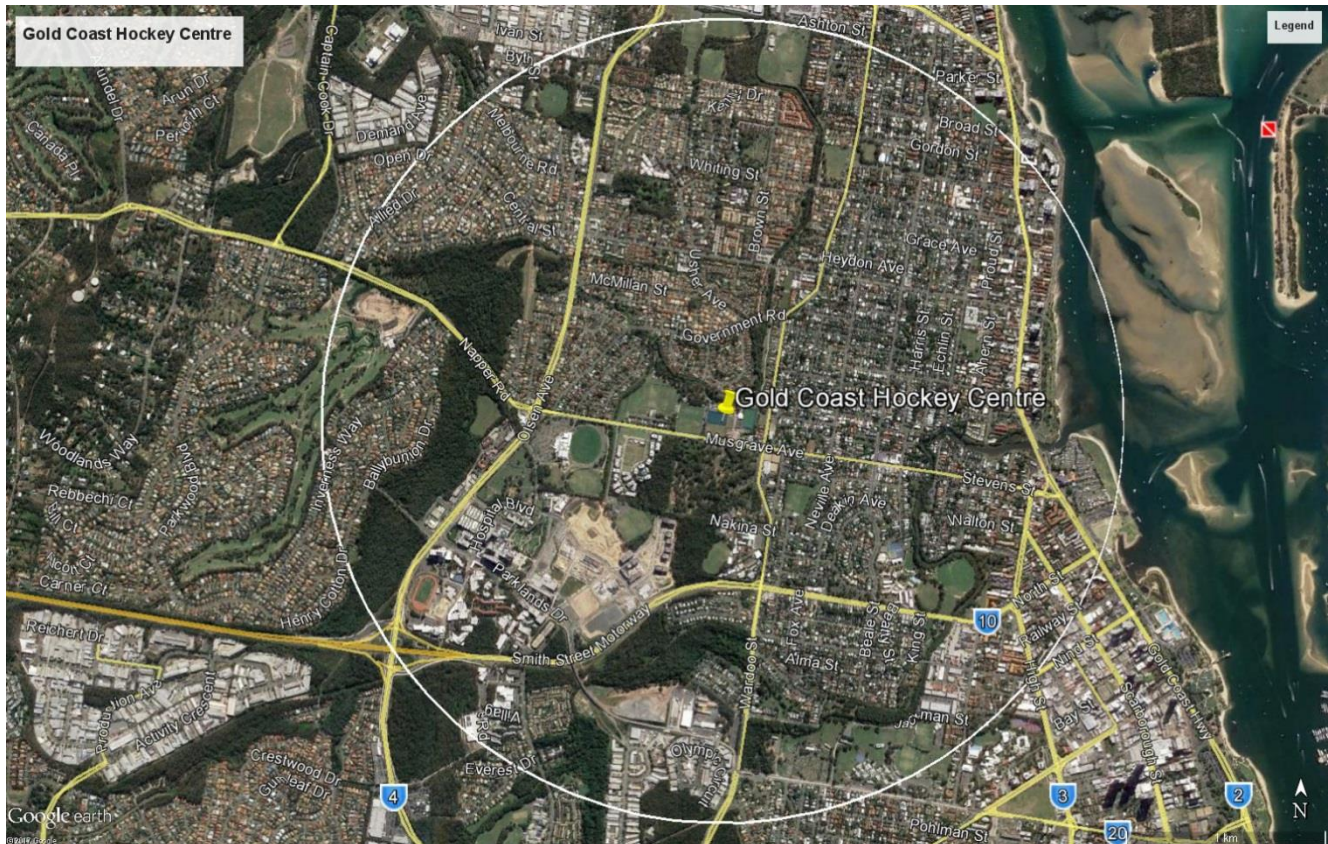


Figure 12: The white circle above indicates the area encompassed by the TRA

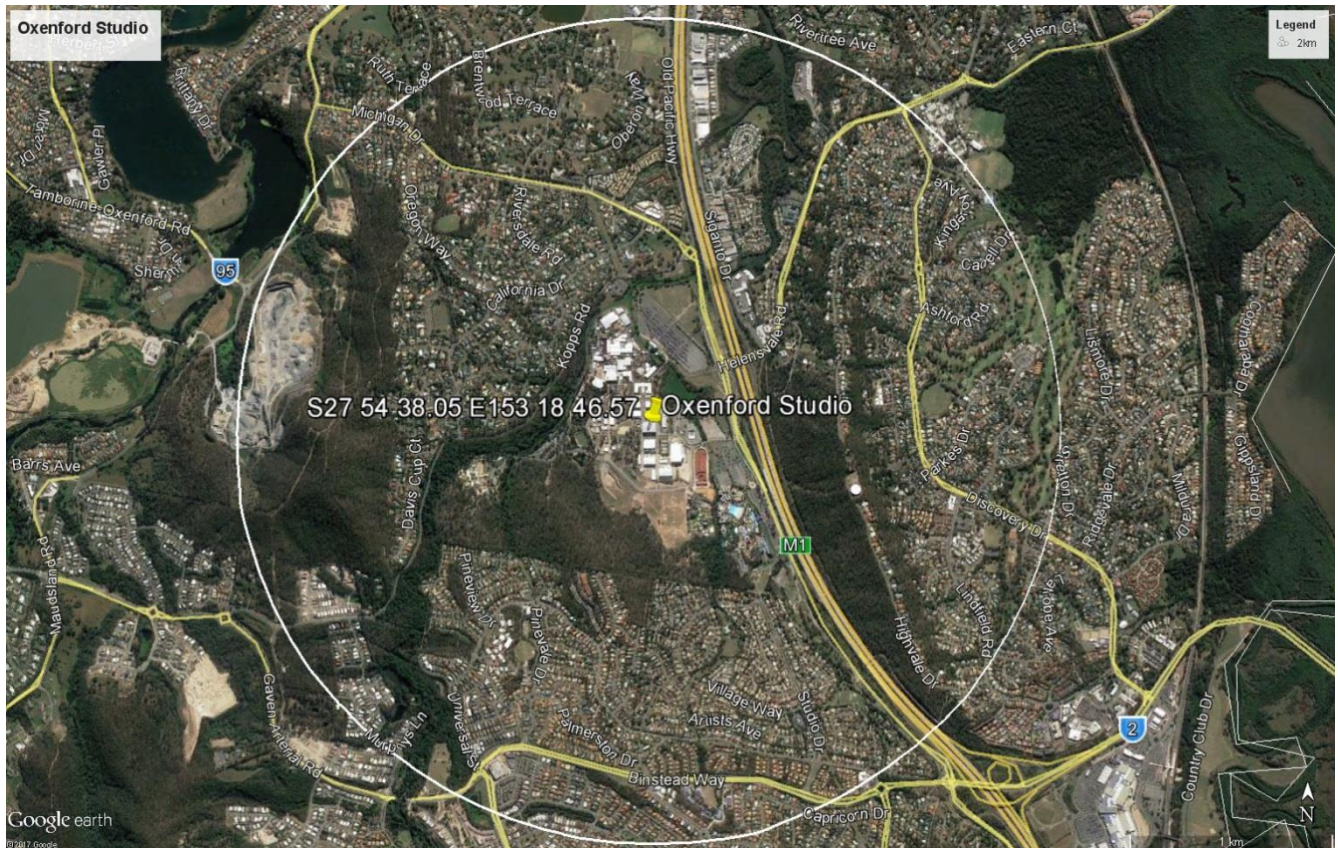


Figure 13: The white circle above indicates the area encompassed by the TRA

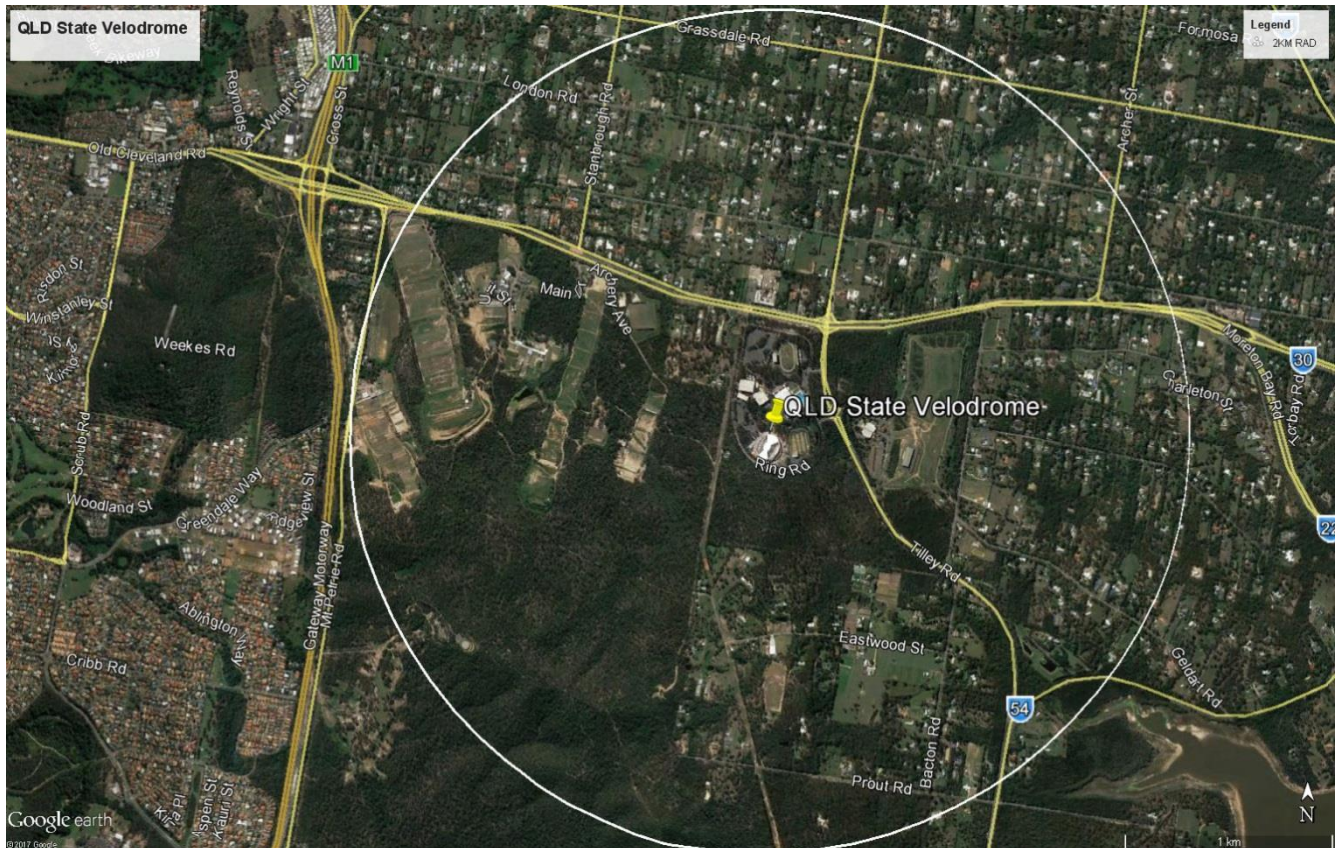
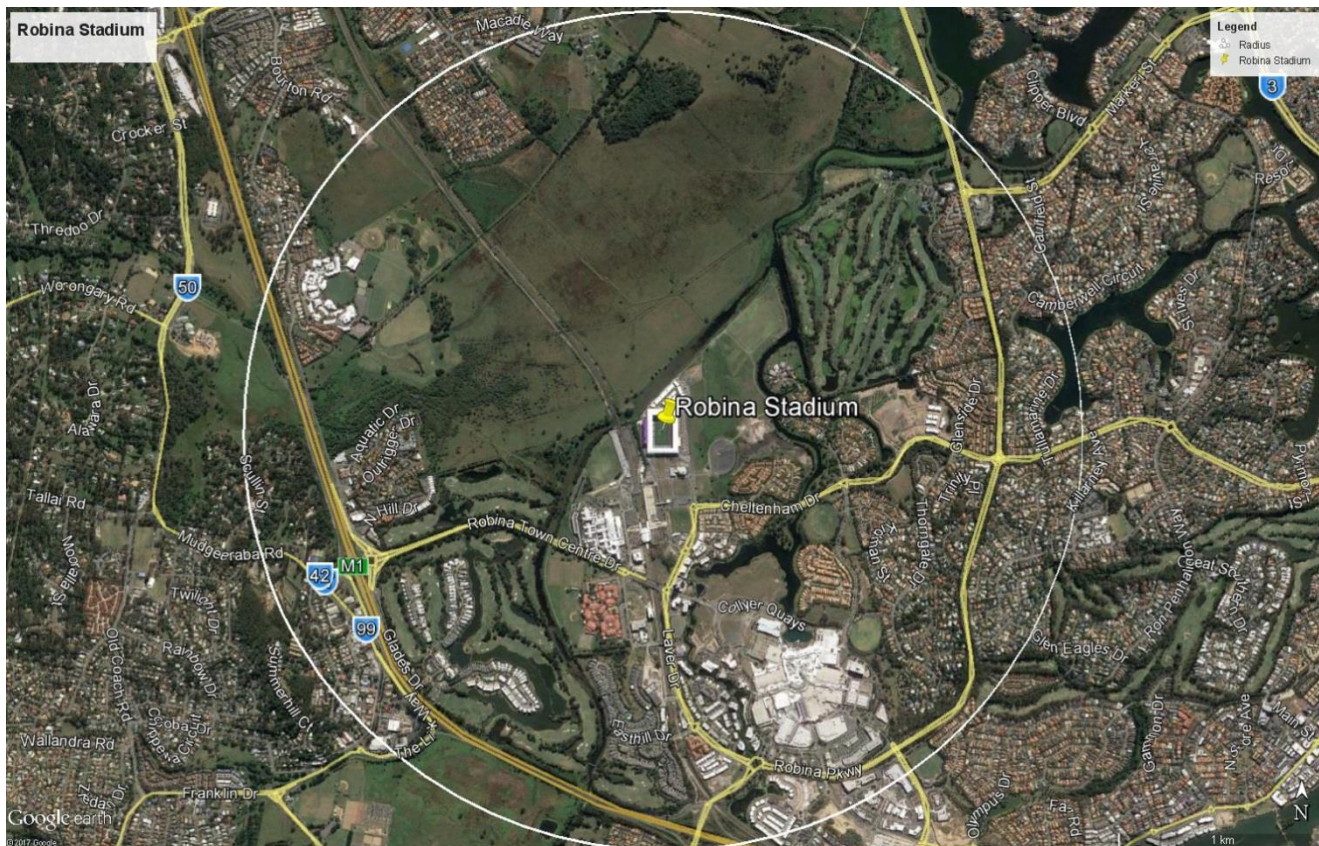


Figure 14: The white circle above indicates the area encompassed by the TRA



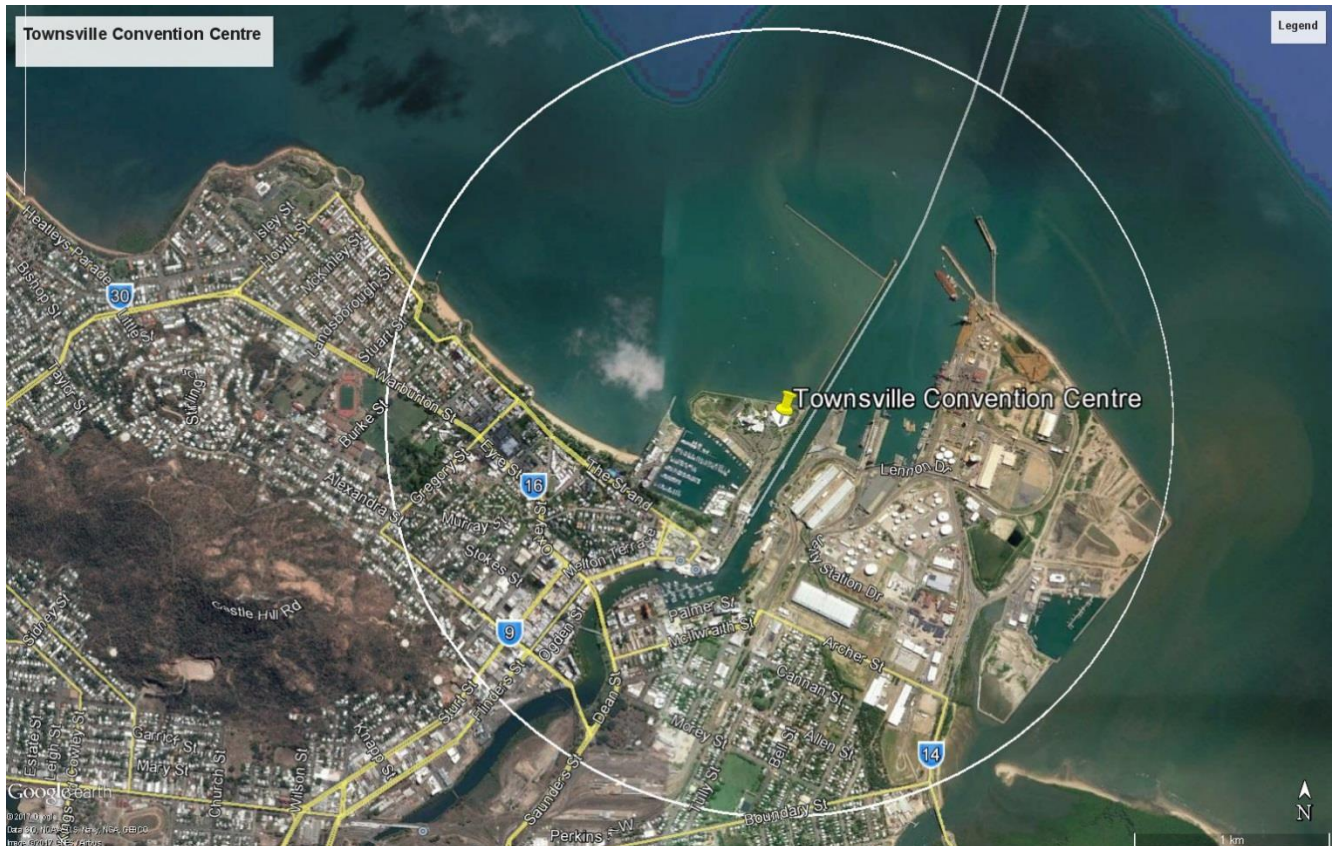


Figure 16: The white circle above indicates the area encompassed by the TRA

4. LOW LEVEL HELICOPTER OPERATIONS TRA MARATHON

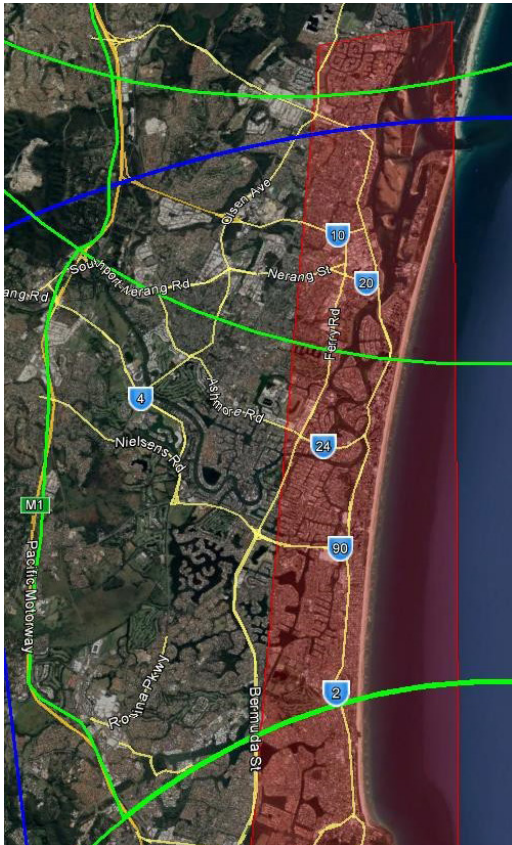


Figure 17: The red area indicates the area encompassed by the TRA

Description:

TRA Marathon is established within the following points of latitude and longitude as indicated in Figure 2 above: 27 54 58.46S 153 23 6.69E, 27 54 10.13S 153 25 7.87E, 28 6 8.39S 153 28 47.92E, 28 6 47.84S 153 25 56.86E, 27 54 58.46S 153 23 6.69E from surface to 1,000FT above ground level (AGL) on the following dates/times:

13 April from 10:00am to 12:30pm

15 April at 00:01am to 15 April at 2:00pm

Description:

From 14 April at 00:01am to 14 April at 7:00pm

TRA TIME TRIAL

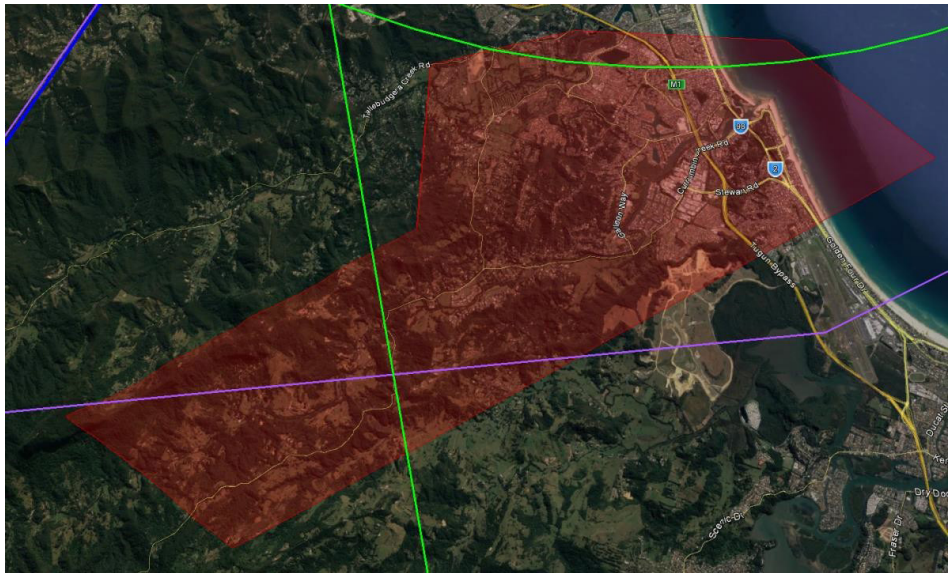


Figure 19: The red area indicates the area encompassed by the TRA

Description:

TRA Time Trial is established within the following points of latitude and longitude as indicated in Figure 4 above: 28 13 38.00S 153 24 3.14E, 28 7 50.92S 153 31 19.53E, 28 6 45.13S 153 29 15.01E, 28 7 7.31S 153 26 32.72E, 28 7 57.52S 153 24 44.53E, 28 9 57.51S 153 25 6.85E, 28 12 45.65S 153 21 48.43E, 28 13 38.00S 153 24 3.14E from surface to 1,000FT above ground level (AGL) on the following dates/times:

9 April from 9:00am to 11:00am

10 April from 8:00am to 5:00pm

TRA TRIATHLON

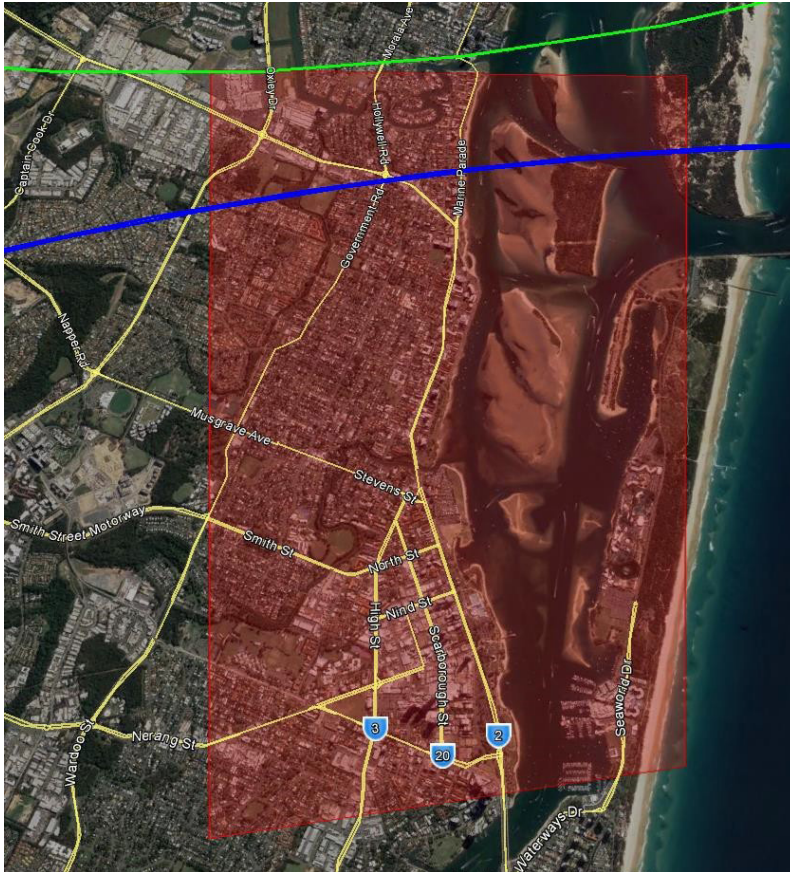


Figure 20: The red area indicates the area encompassed by the TRA

Description:

TRA Triathlon is established within the following points of latitude and longitude as indicated in Figure 5 above: 28 10 26.56S 153 28 43.05E, 28 9 37.77S 153 28 44.21E, 28 9 35.03S 153 29 20.82E, 28 7 45.70S 153 31 7.06E, 28 6 44.77S 153 29 18.72E, 28 7 7.33S 153 26 31.05E, 28 7 54.68S 153 24 28.74E, 28 11 26.26S 153 25 14.76E, 28 10 26.56S 153 28 43.05E from surface to 1,000FT above ground level (AGL) on the following dates/times:

3 April from 08:00am to 11:00am

5 April at 00:01am to 7 April at 5:00pm

TRA MOUNTAIN BIKE

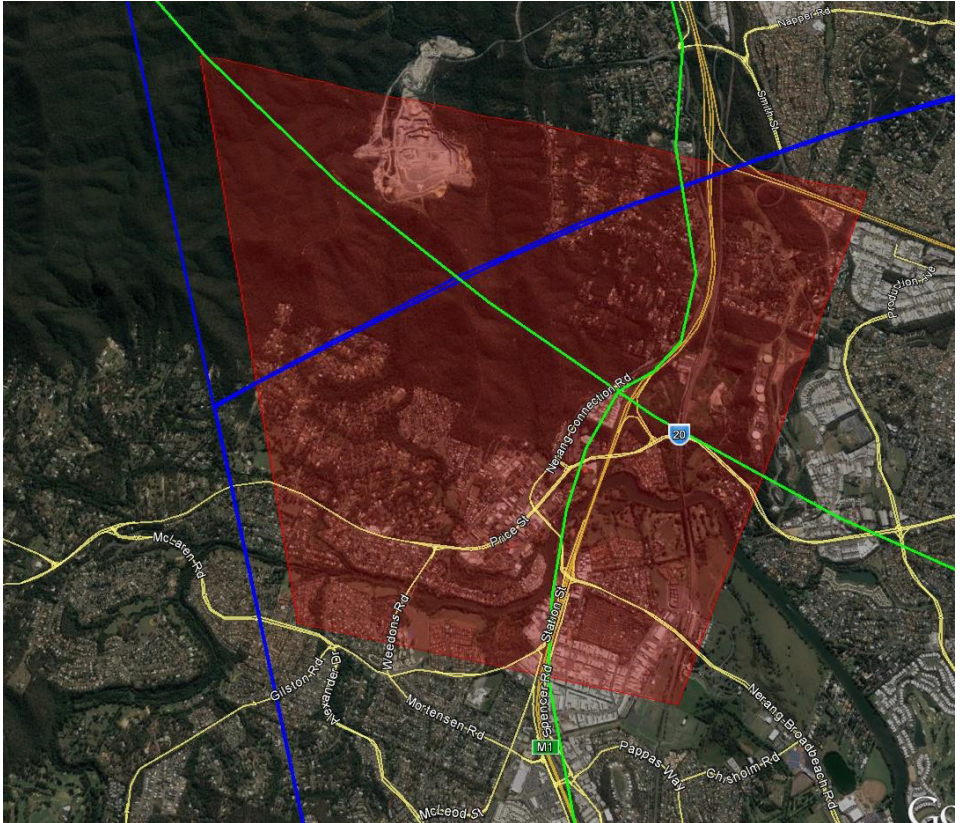


Figure 21: The red area indicates the area encompassed by the TRA

Description:

TRA Mountain Bike is established within the following points of latitude and longitude as indicated in Figure 6 above: 27 57 39.25S 153 18 0.87E, 27 57 38.61S 153 21 30.68E, 28 0 1.60S 153 21 0.86E, 28 0 3.06S 153 19 13.86E, 27 57 39.25S 153 18 0.87E from surface to 1,000FT above ground level (AGL) on the following dates/times:

From 11 April from 9:00am to 12 April at 6:00pm

TRA RACE WALK

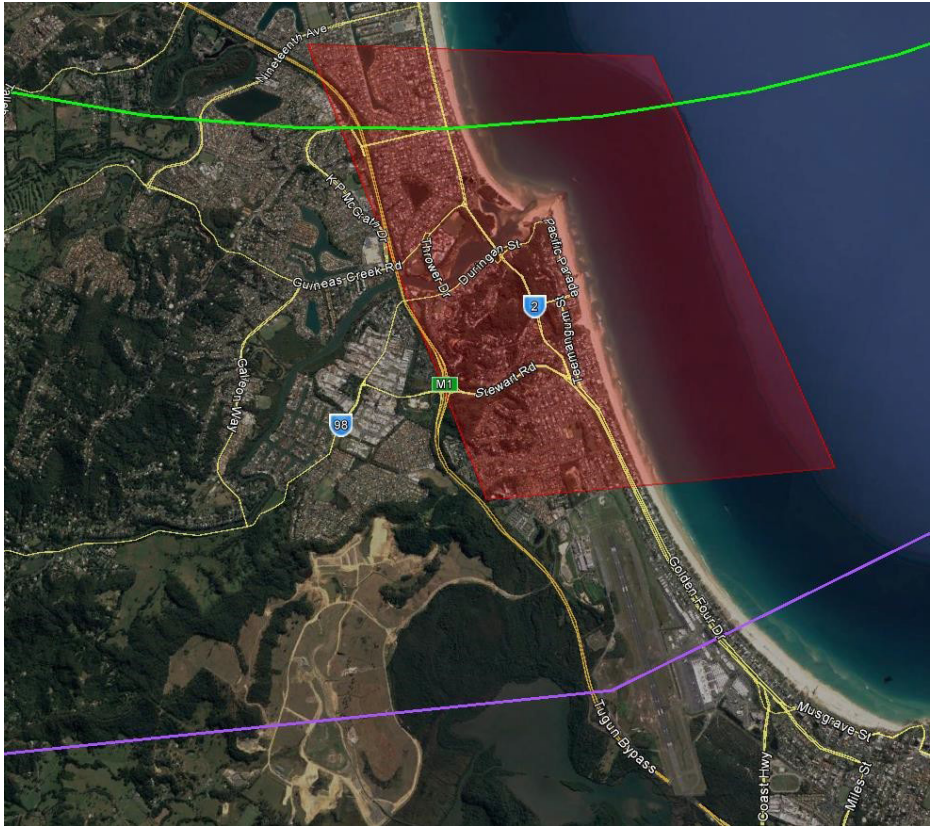


Figure 22: The red area indicates the area encompassed by the TRA

Description:

TRA Race Walk is established within the following points of latitude and longitude as indicated in Figure 7 above: 28 6 57.31S 153 27 19.82E, 28 6 34.47S 153 29 33.73E, 28 8 41.95S 153 31 16.51E, 28 9 17.21S 153 29 13.8E, 28 6 57.31S 153 27 19.82E from surface to 1,000FT above ground level (AGL) on the following dates/times:

7 April at 09:00am to 7 April at 12:00pm

8 April at 00:01am to 8 April at 3:00pm